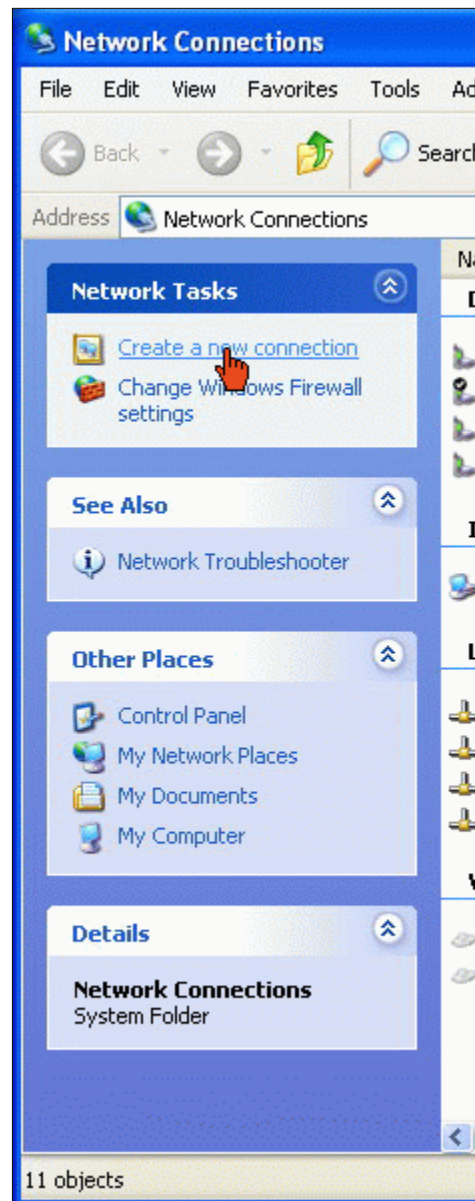


## Configuring the VPN connection

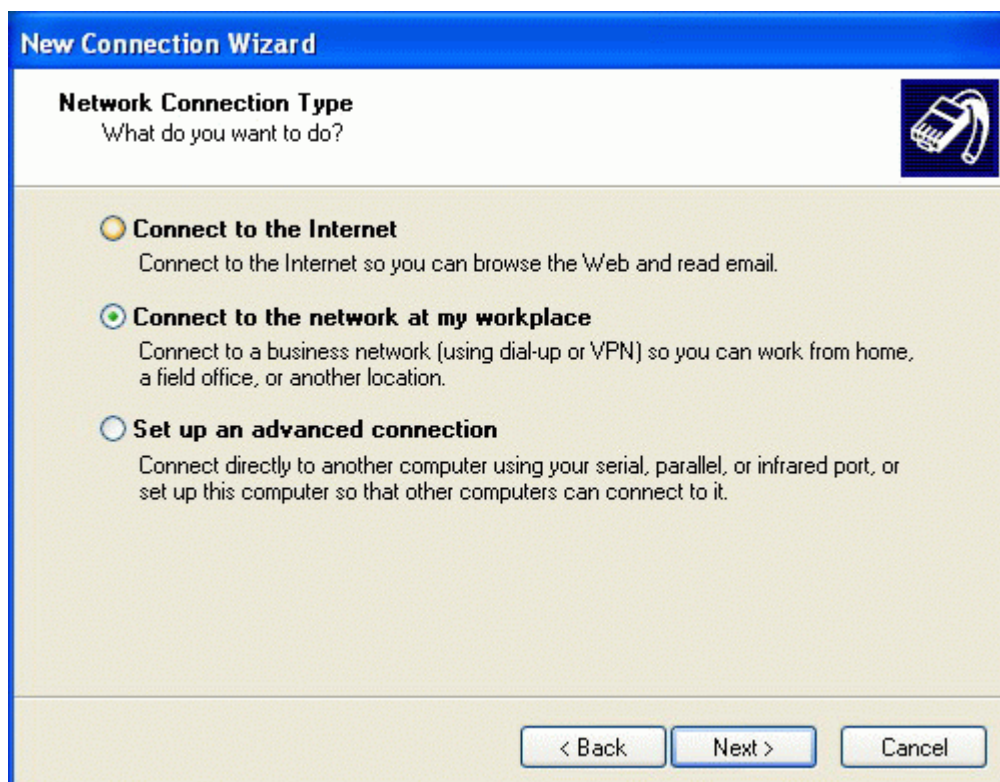
1. Press "**START**" then "**CONTROL PANEL**" then open the "**NETWORK CONNECTIONS**".



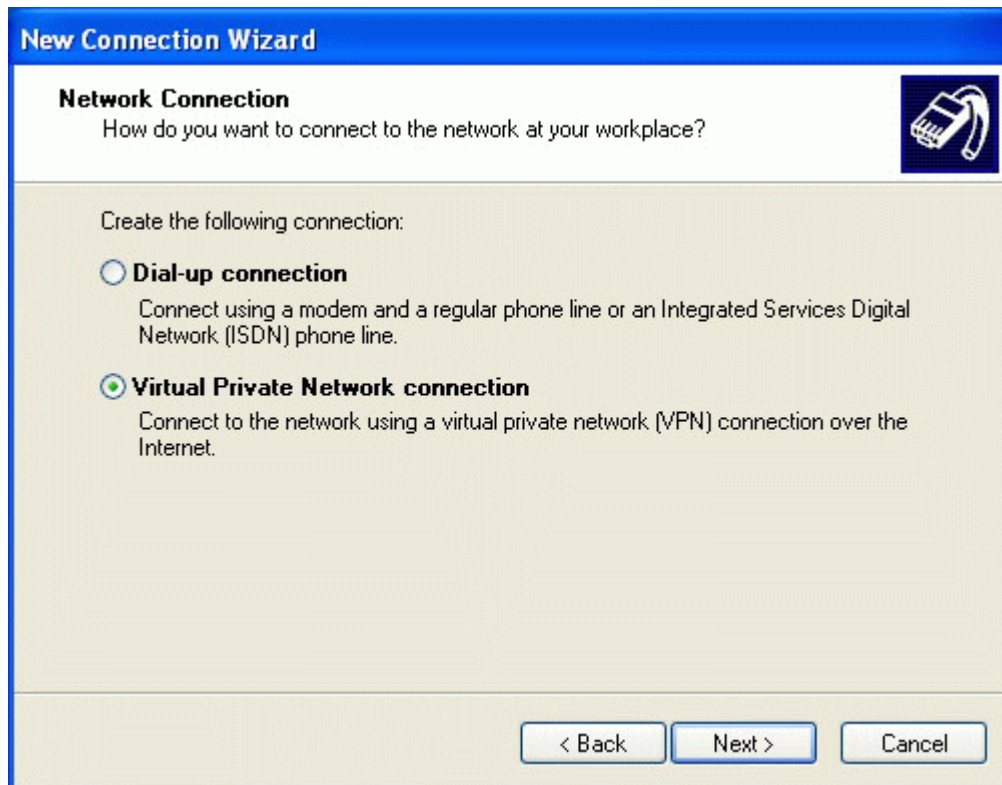
2. Click "**Create a new connection**"



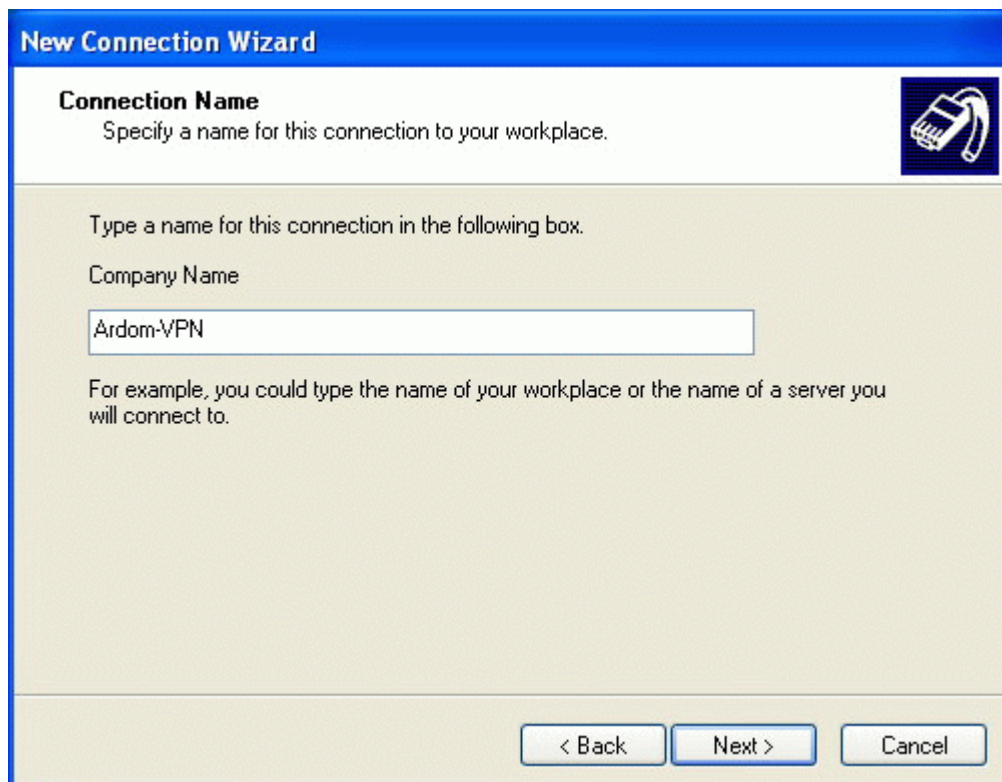
3. Click "Next"



4. Check "Connect to the network at my workplace" and click "Next".

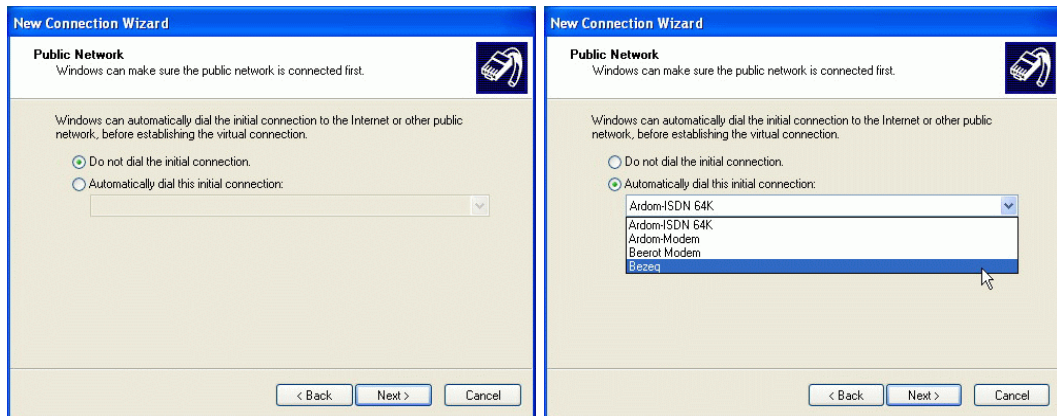


5. Choose "**Virtual Private Network connection**" and click "**Next**"



6. Type "**Ardom-VPN**" as a name of the connection and press "**Next**".

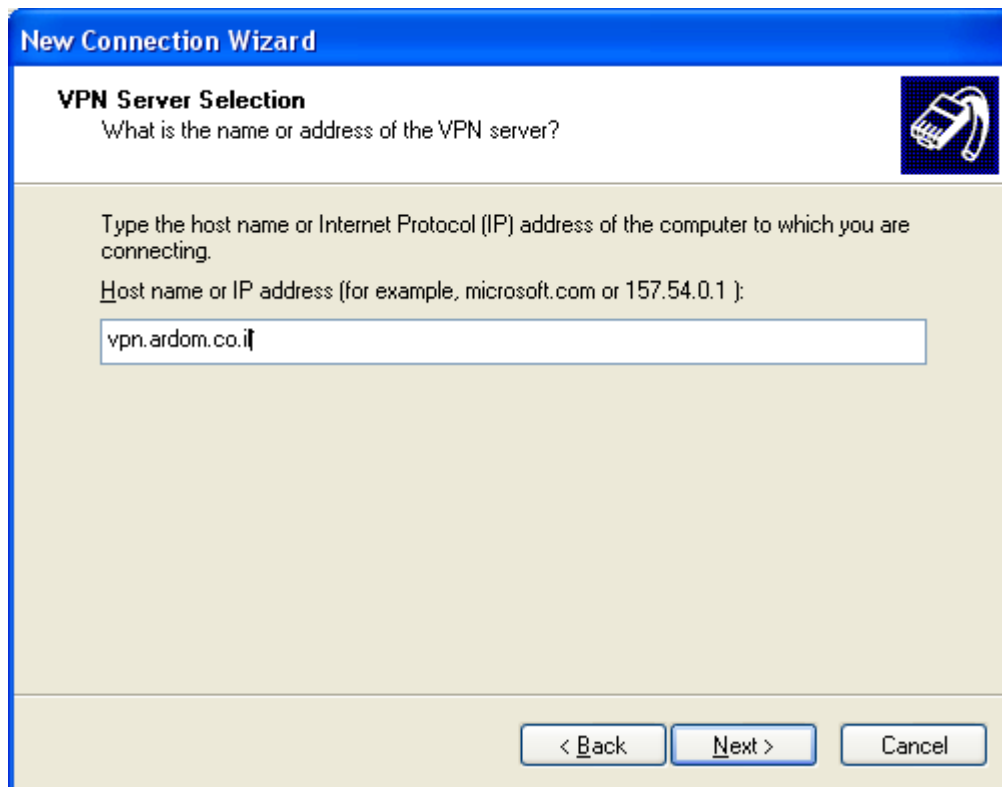
## Next step may not present



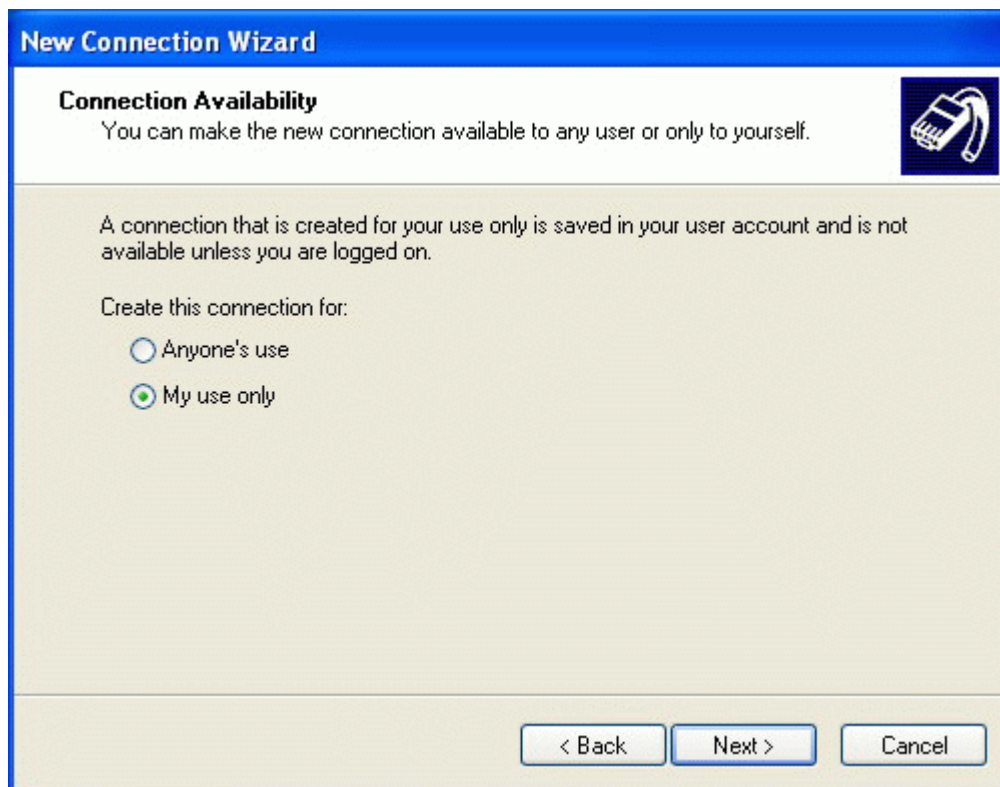
7a. Check **"Do not dial the initial connection"** if you continuously connected to the Internet.

**OR**

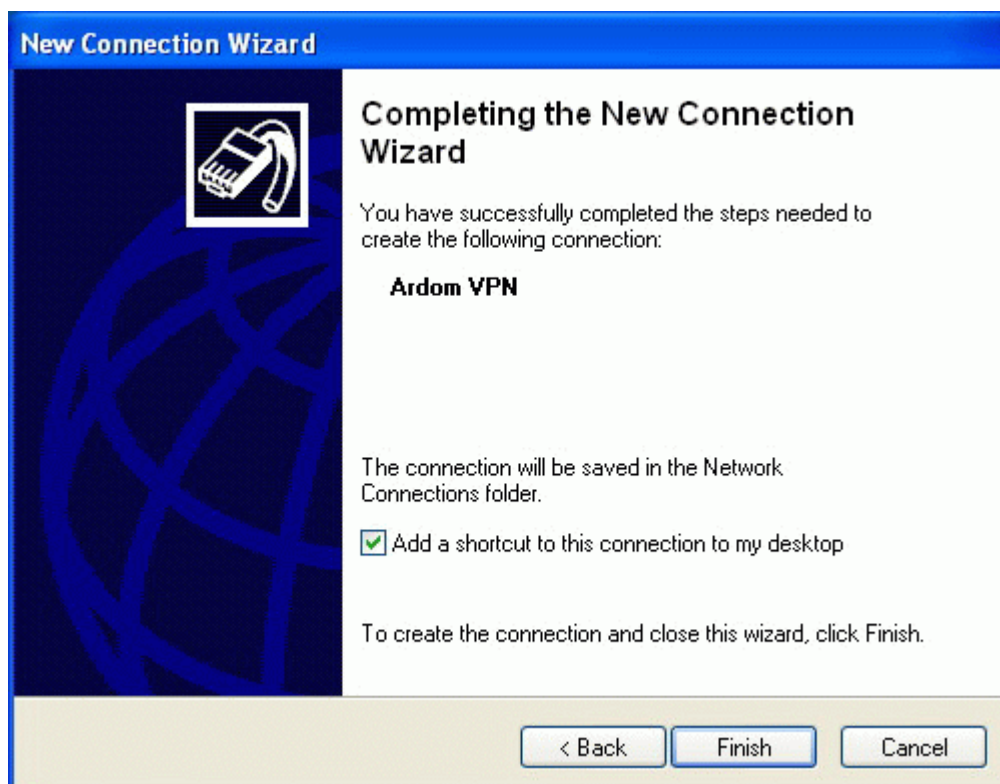
7b. Check **"Automatically dial the initial connection"** and choose your Internet dialer from the list – if you connect to the internet manually. Then press **"Next"**



8. Type **vpn.ardom.co.il** and press **"Next"**



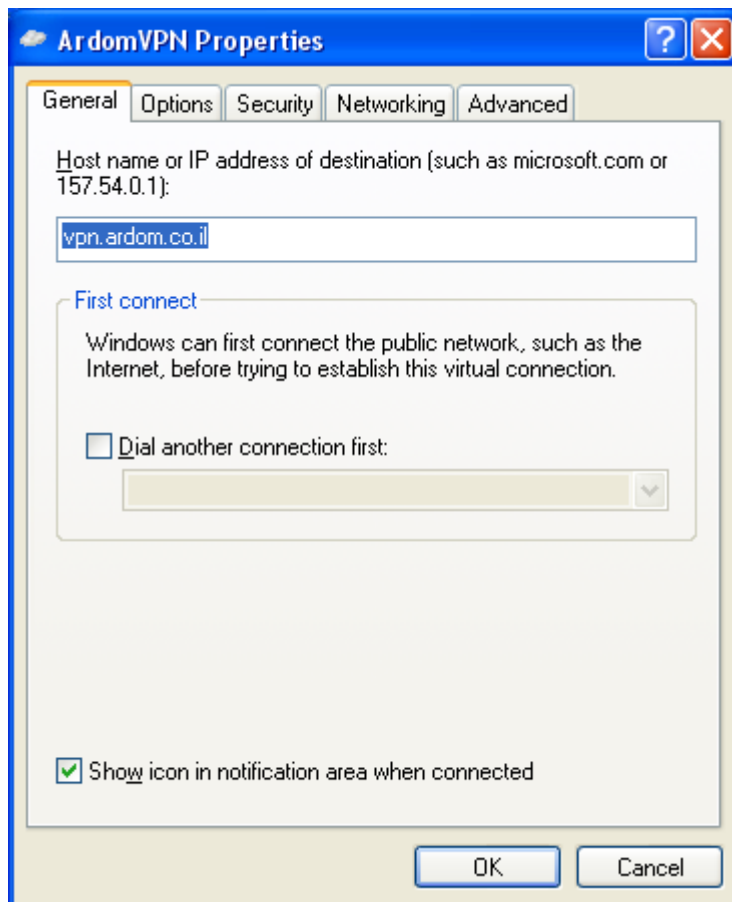
9. Check **"My use only"** and press **"Next"**.



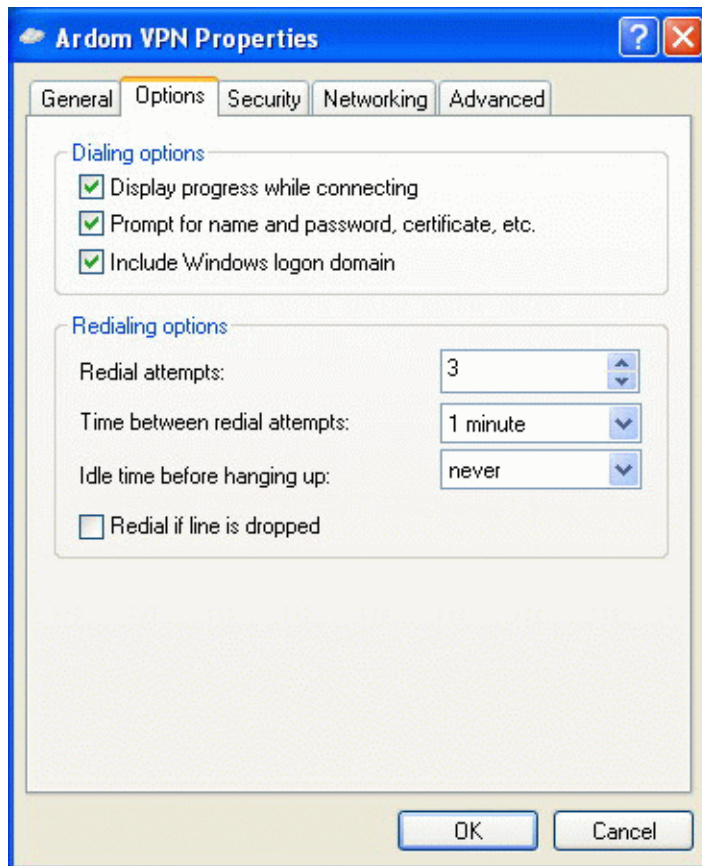
10. Check **"Add a shortcut to this connection to my desktop"** and press **"Finish"**



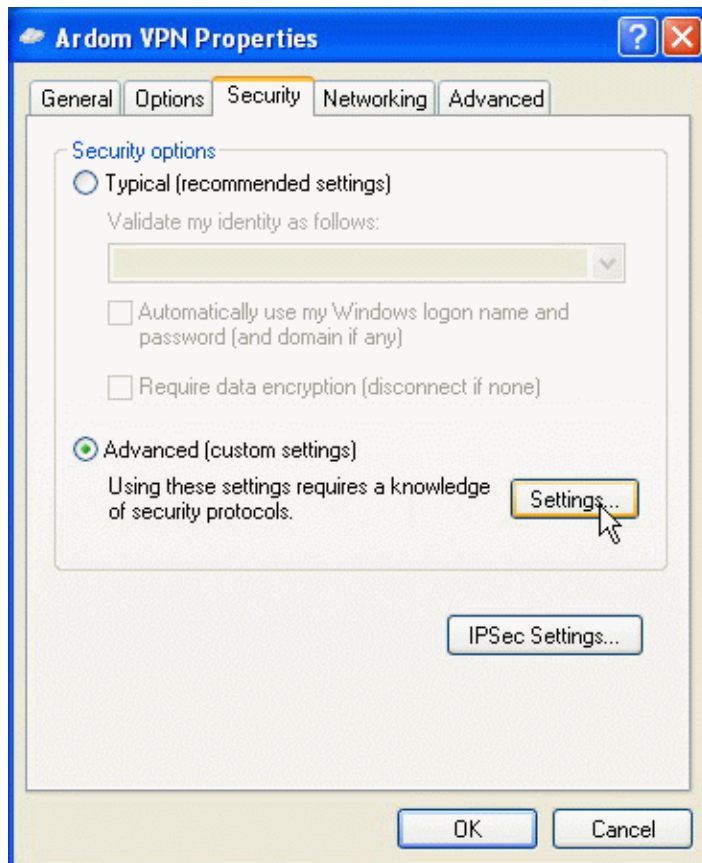
11. Press "**Properties**".



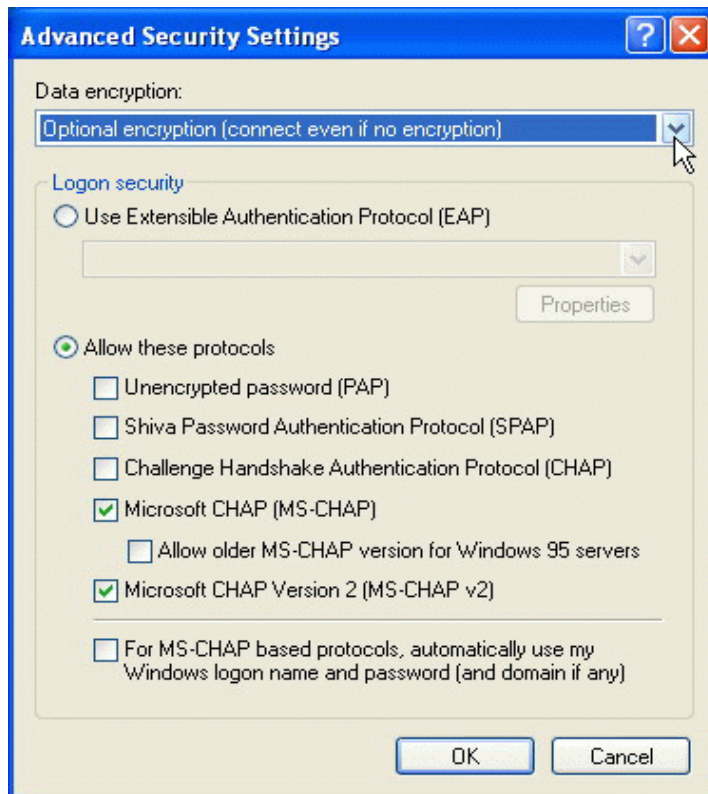
12. The "**Ardom-VPN Properties**" will be displayed.



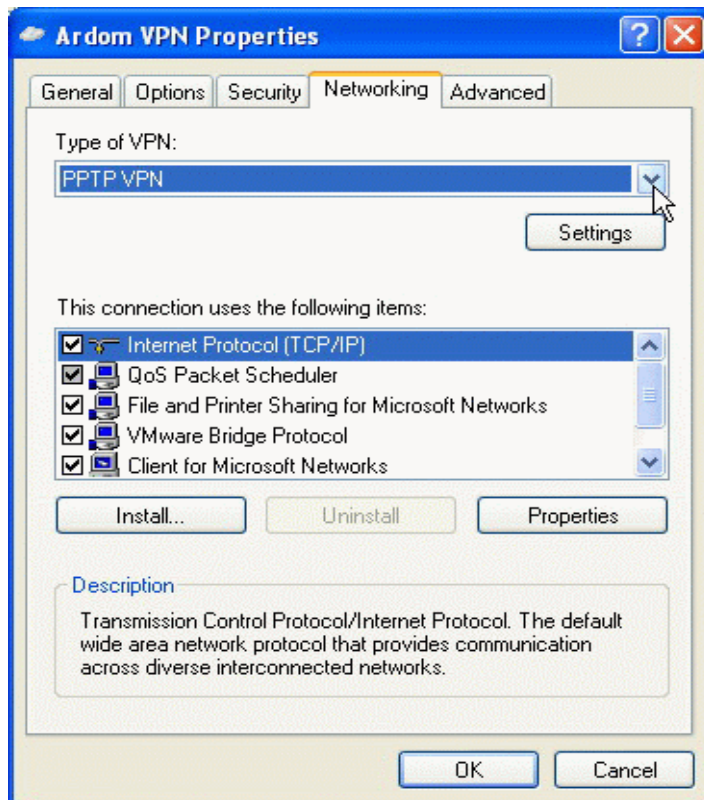
13. Click on "**Options**" tab and make the window looks like in the picture.



14. Check "**Advanced (custom settings)**" and press "**Settings**".



15. Choose "**Optional encryption (connect even if no encryption)**" from the list, check the "**Microsoft CHAP (MS-CHAP)**" and "**Microsoft CHAP Version 2 (MS-CHAP v2)**". Leave all other protocols unchecked. Press "**OK**".



16. Click on "**Networking**" tab and choose the "**PPTP VPN**" from the list.





17. Enter your username, password and domain name and press "**Connect**".

**You have finished configuring your VPN connection!**